



**SPIERINGS  
CRANES**

**Make: SPIERINGS**

**Type: SK599-AT5**

**Crane specification**

Serial number

Year of construction

Crane group : A3 as per FEM 1.001  
 Loadspectrum : Q1 as per FEM 1.001  
 Classification : U4 as per FEM 1.001  
 Stability : as per FEM 1.001

Max. load  
**9,0 tonne**

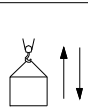
Max.radius  
with max. load  
**13 m**

Max. capacity  
**117 tm**

Max. jib length  
**50 m**

**Speeds**

Jib horizontal / jib 30° luffed



m/min	kg	0 - 70 m/min	0 - 0,9 rpm
20	9000		
32	4500		
50	2250		
75	0		

All motions with hydraulic proportional controls  
 Luffing the jib 30° can be controlled from crane cab or via remote control  
 The crane should be folded in at a wind force of 9 on the Beaufort scale (wind speed 21 m/min) or when not in use for a longer period

Crane equipped with full counterweight: 11300 kg  
 360° continuous slewing : with outriggers out and down  
 Operating temperature : range from -15° to 40° C.

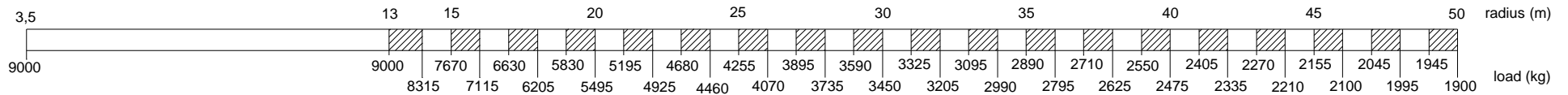
Rated lifting capacity is net capacity  
 In all cases 2 parts of line  
 Max. line pull force : 4500 kg  
 Sail area of the load : max. 1,0 m<sup>2</sup> / tonne  
 Max. outrigger loading: 440 kN

**Outrigger position : 7,50 x 7,66 m**  
 Operation allowed up to a wind force of 7 on the Beaufort scale (wind speed 14 m/sec)  
**Outrigger position : 7,50 x 5,72 m**  
 Operation allowed up to a wind force of 7 on the beaufort scale (wind speed 14 m/sec)

**Lifting chart Outrigger spread 7,50 m x 7,66 m**

**Jib horizontal**

Hookheight 25,5 / 32,6 m (height under jib 27,8 / 34,6 m)



**Jib 30° luffed**

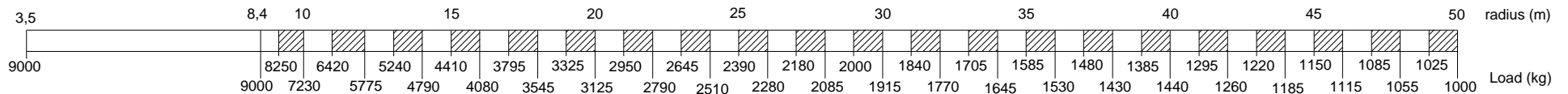
hookheight (m) 37,8 39,8 42,7 45,6 48,5 51,4 54,2 56,3



**Lifting chart Outrigger spread 7,50 m x 5,72 m**

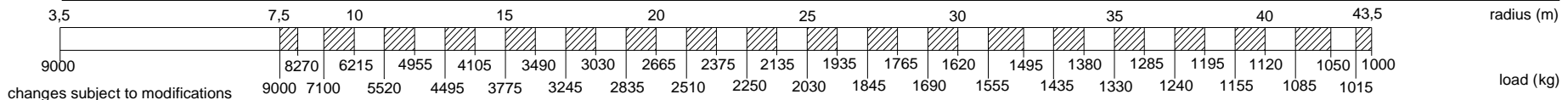
**Jib horizontal**

Hookheight 25,5 / 32,6 m (height under jib 27,8 / 34,6 m)

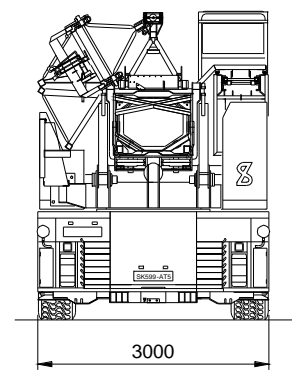
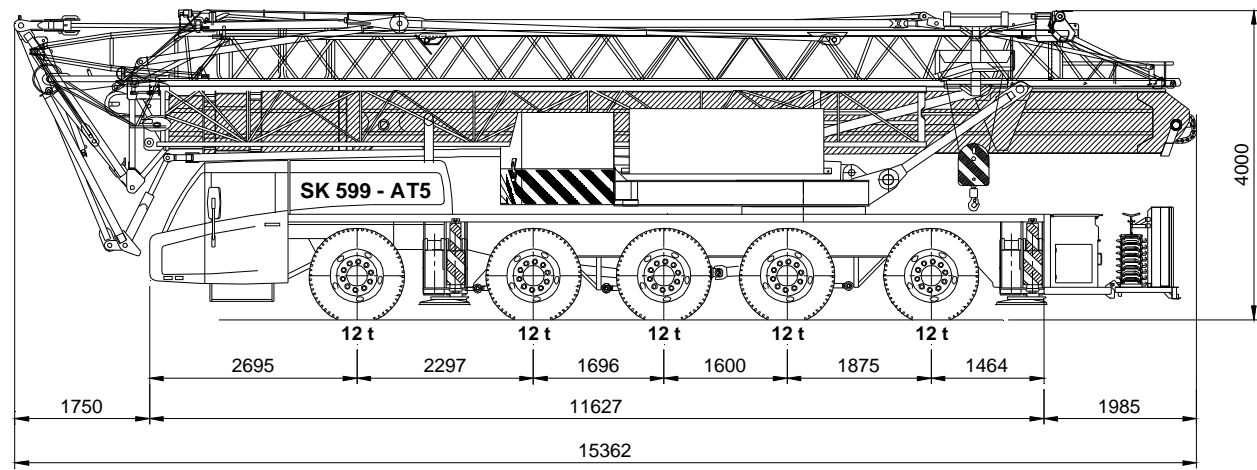
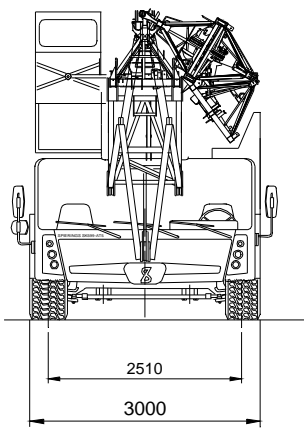
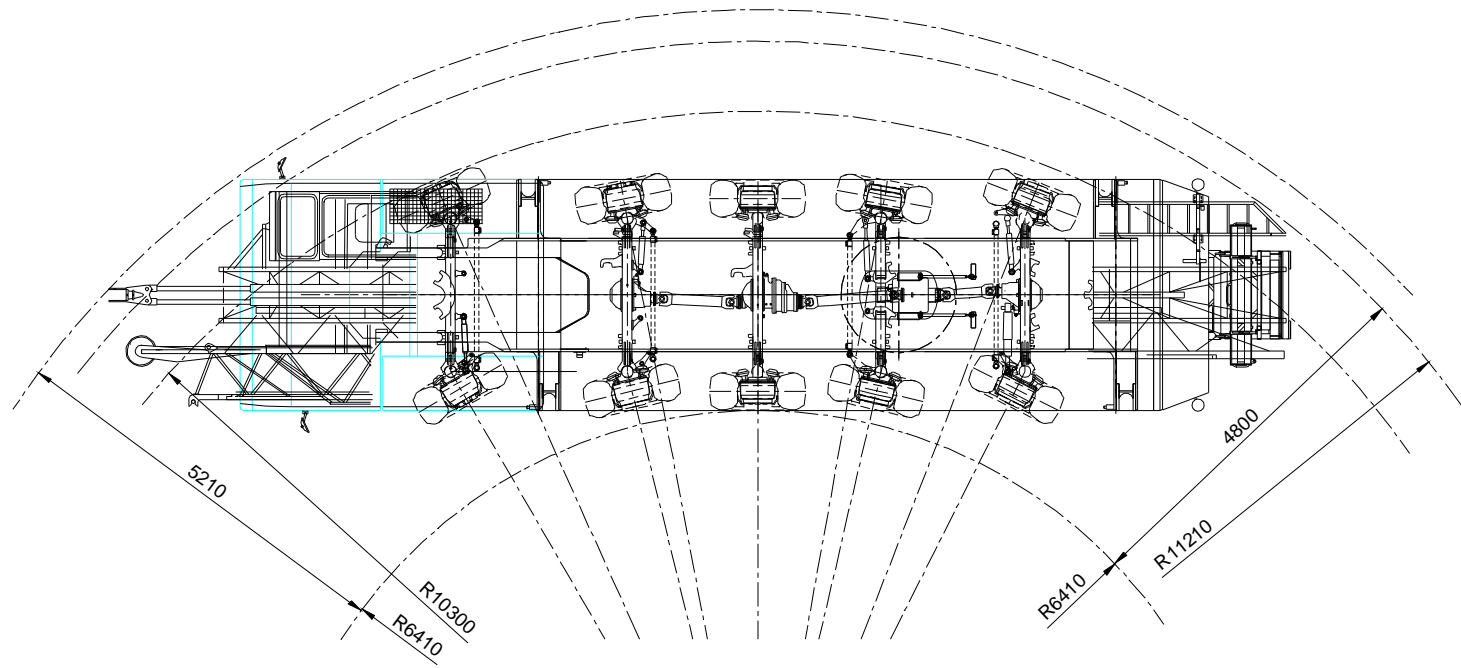


**Jib 30° luffed**

hookheight (m) 35,5 36,9 39,8 42,7 45,6 48,5 51,4 54,2 56,3



changes subject to modifications



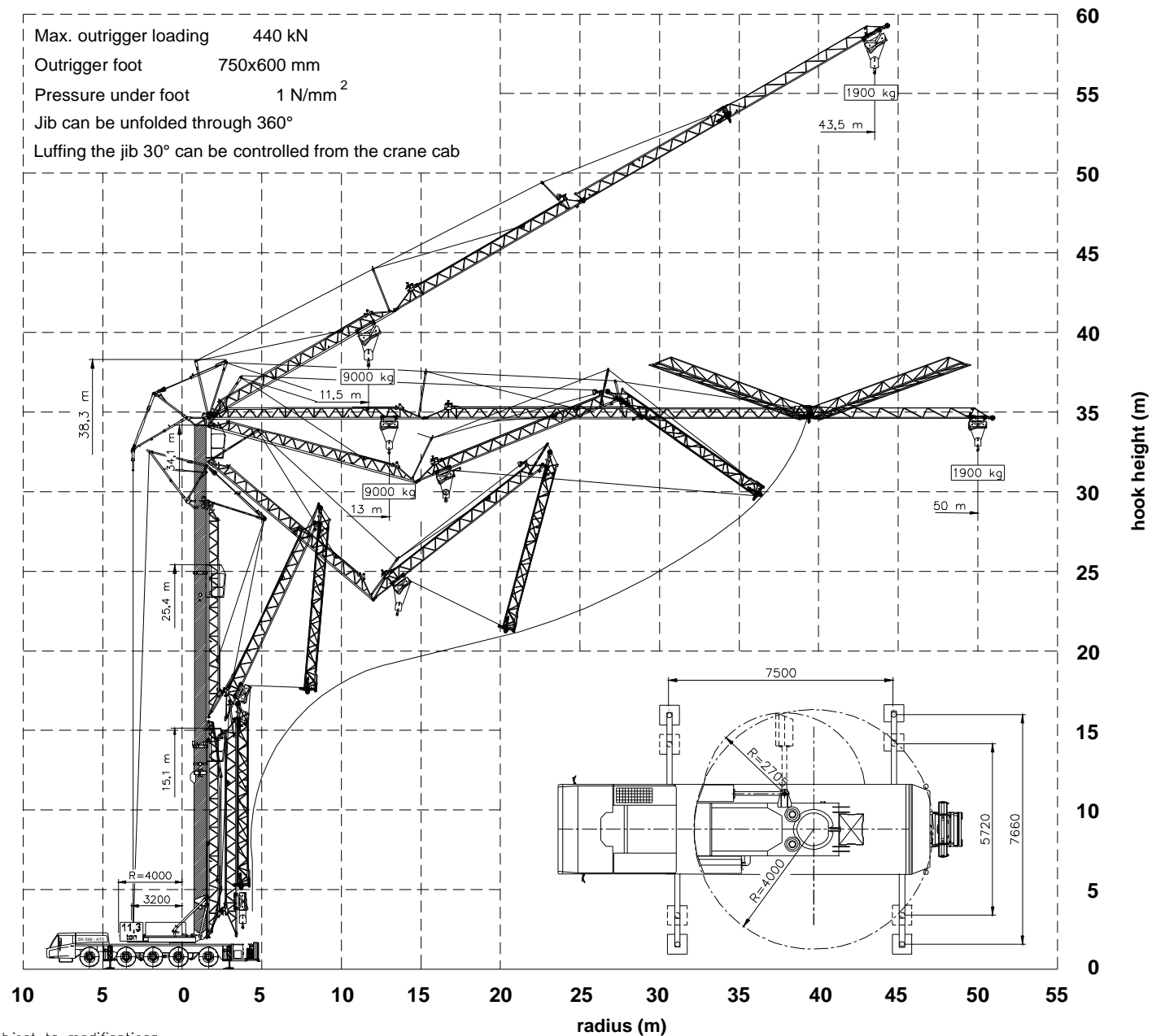
# Spierings Hydraulic Folding Crane

## SK 599 - AT5

Total weight: 60000 kg  
changes subject to modifications

**SPIERINGS  
KRANEN**  
Merwedestraat 15  
5347 KZ Oss NL  
Tel. +31 (0)412-626964  
Fax +31 (0)412-645299

Max. outrigger loading 440 kN  
 Outrigger foot 750x600 mm  
 Pressure under foot 1 N/mm<sup>2</sup>  
 Jib can be unfolded through 360°  
 Luffing the jib 30° can be controlled from the crane cab

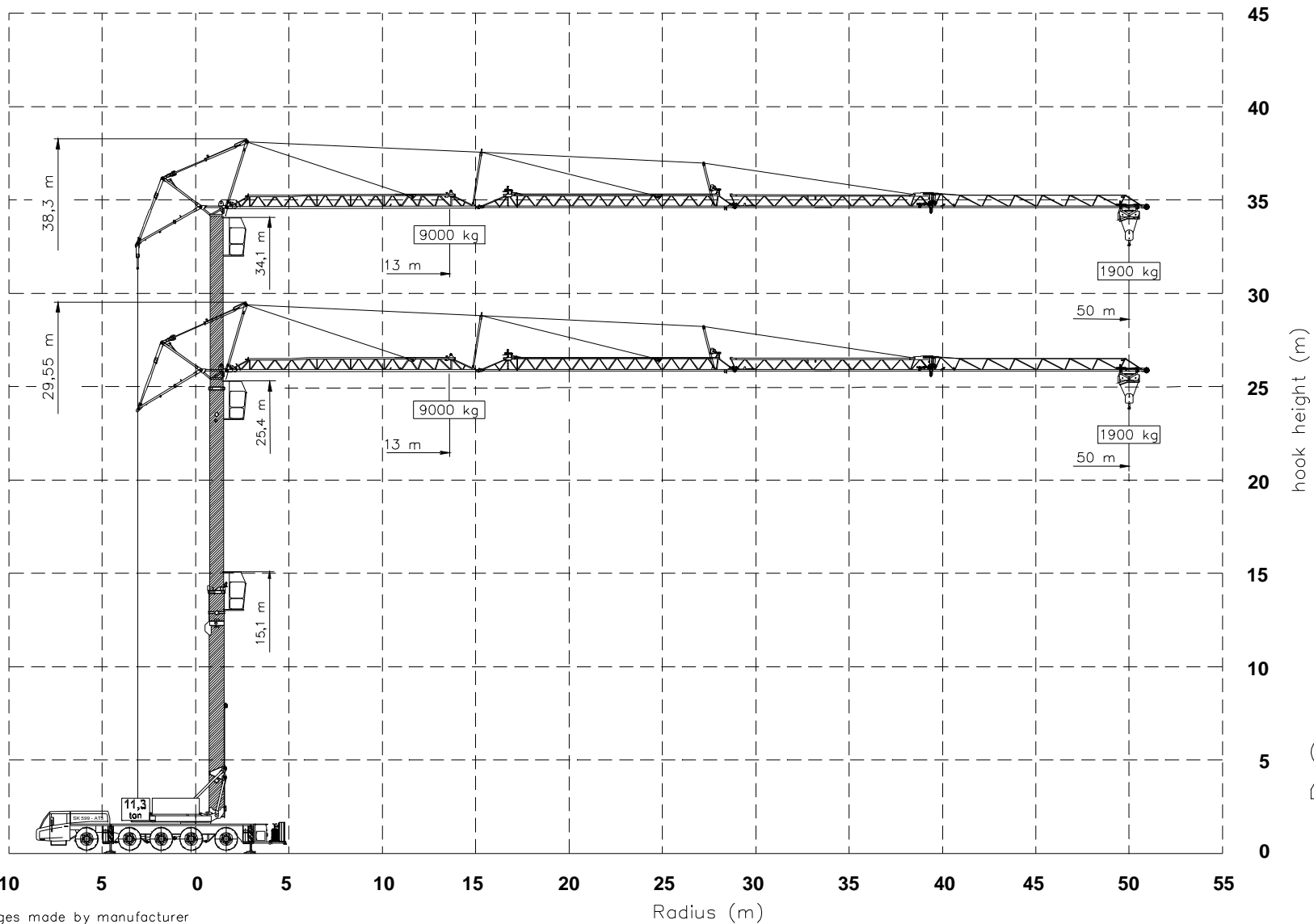


# SPIERINGS HYDRAULIC FOLDING CRANE SK599-AT5



Merwedestraat 15  
 5347 KZ Oss NL  
 Tel. +31 (0)412-626964  
 Fax +31 (0)412-645299

# SPIERINGS HYDRAULIC FOLDING CRANE SK599-AT5

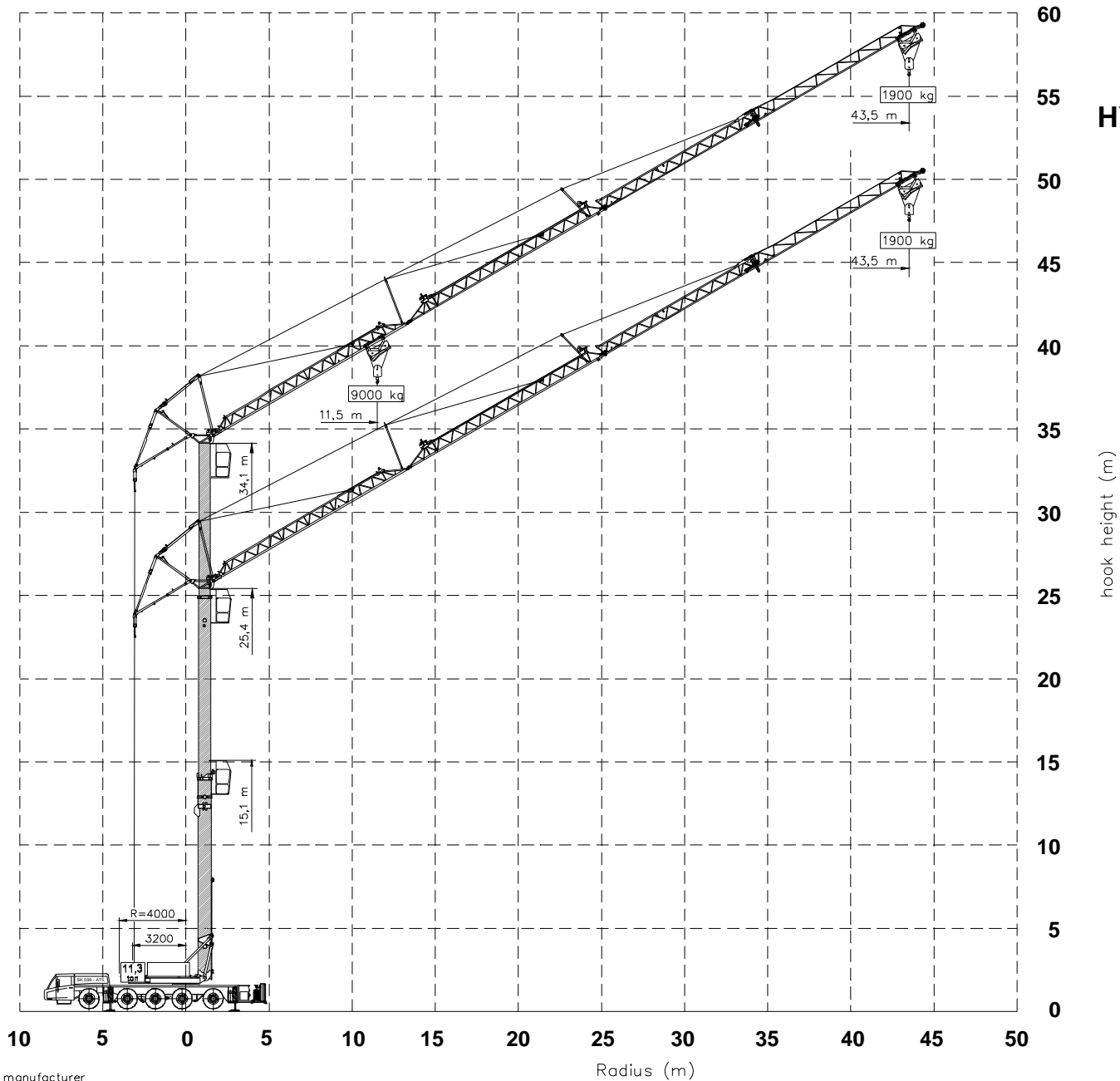


changes made by manufacturer

**SPIERINGS  
KRANEN**

Merwedestraat 15  
5347 KZ Oss NL  
Tel. +31 (0)412-626964  
Fax +31 (0)412-645299

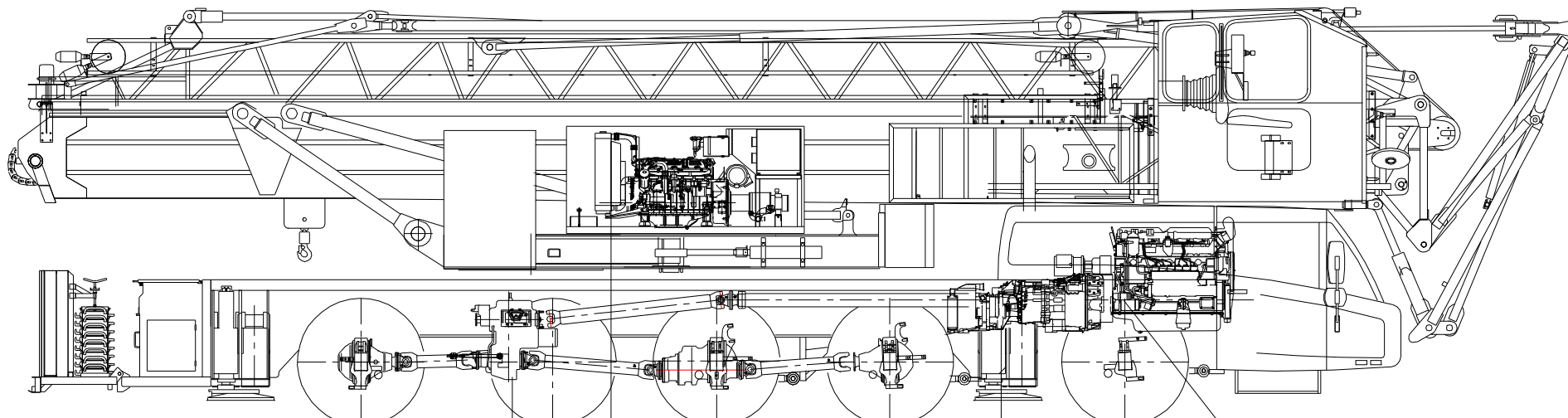
# SPIERINGS HYDRAULIC FOLDING CRANE SK599-AT5



changes made by manufacturer

 **SPIERINGS  
KRANEN**

Merwedestraat 15  
5347 KZ Oss NL  
Tel. +31 (0)412-626964  
Fax +31 (0)412-645299



Axle 5		Axle 4		Axle 3		Axle 2		Axle 1	
Transfer box:		Crane diesel engine:		Gearbox:		Carrier diesel engine:			
STEYR VG2001/396		DETROIT VM D706 IE2		ZF 16AS2601		DAF XE 390 C (EURO 3)			
Road gear	i=0,89	Power:	96 kW (2600 rpm)	Automatic		Power:	390 kW (1900 rpm)		
Off road gear	i=1,54	Torque:	480 Nm (1300 rpm)	Dry plate clutch		Torque:	2300 Nm (1500 rpm)		
				+ retarder					

Axle 1 : Steer axle	Tyres	: 445/75 R22,5
Axle 2 : Steer drive axle (end reduction i=6,35)	Suspension: hydro-pneumatic on all axles; stroke cyl.	: 247 mm
Axle 3 : Drive axle , non steered (end reduction i=6,35)	Max. speed carrier	: 85 km/h
Axle 4 : Steer axle	Min. speed carrier (engine at 1000 rpm)	: 1,6 km/h
Axle 5 : Steer drive axle (end reduction i=6,35)	Overall weight	: 60.000 kg.

## Drive train Spierings Folding Crane SK 599 - AT5

Changes subject to modifications